

**16.00-17.30: Challenging  
Moralties: the Thin Line  
Between Scandal and  
Provocation**

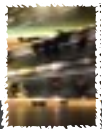
· *Laura Owen* (University of London Inst. in Paris),  
The Route to Excess: Re-Situating  
Laure

· *Sarah St. John* (University of Kent),  
Cocteau's *Parade*: the Scandalous  
Ballet with a Mask of Ambiguity

· *Elaine Morley* (University of Kent),  
Morality and Ambiguity in the Writings  
of Iris Murdoch and Elias Canetti

**17.30-18.30:** Roundtable

**18.30-19.00:** Closing remarks



Photographic Exhibition  
Inauguration: 22nd May 2009,  
9:30AM

Virginia Woolf College, Main Hall  
University of Kent at Canterbury



Photo by Bryony Pierce



**AMBIGUITIES**  
DESTABILISING PRECONCEPTIONS

Skepsi's Second Annual Graduate Conference  
and  
Photographic Exhibition

<http://www.kent.ac.uk/secl/journals/skepsi/events.html>  
[ambiguities2009@kent.ac.uk](mailto:ambiguities2009@kent.ac.uk)

22nd-23rd May 2009,  
Virginia Woolf College, Seminar Room 6  
University of Kent at Canterbury

## Friday 22nd May 2009

**9.00-9.30:** Registration

**9.30-10.00:** Welcome

### **10.00-12.00: Ambiguous Genders**

· *Kate Nelson Best* (King's College, London),  
An Ambiguous Sartorial Phallus: the  
Multiplicity of Meaning Surrounding the  
Figure of *La Parisienne*

· *Marianna Orsi* (Università degli Studi di Pisa),  
*Monstra Tassiani*: Monsters in Torquato  
Tasso's *Gerusalemme Liberata*

· *Claire Humphrey* (University of Manchester),  
The Ambiguity of Feminine Subjectivity in  
the Paris *banlieues*

· *Elodie Vignon* (Sorbonne Nouvelle, Paris),  
Patient-doctor relationships in *The  
Compassion Protocol* by Hervé Guibert

**12.00-13.30: Lunch**

### **13.30-15.00: Ambiguous Arts: Institutions and Audiences**

· *Connel Vaughan* (University College Dublin),  
Ambiguous Exhibitions, Ambiguous  
Institutions

· *Yaël Kreplak* (ENS-LSH, Lyon),  
Talking About Art: Suggestions for a  
Situated Approach of Ambiguity as a  
Linguistic Phenomenon

· *Martine Rouleau* (London Consortium),  
Rules of Engagement Unknown: Cildo  
Meireles at Tate Modern

**15.00-15.30: Coffee Break**

### **15.30-17.00: Taking Off the Mask: Disturbing Investigations of Unreliable Human Minds**

· *Jean Baptiste Chantoiseau* (Sorbonne Nouvelle, Paris),  
Deep Inside Madness - The Materialisation of  
Schizophrenia in David Lynch's aesthetics  
(*Lost Highway, Mulholland Drive, Inland  
Empire*)

· *Kamila Pawlikowska* (University of Kent),  
What's behind the face?

## Saturday 23rd May 2009

### **9.15-11.15: Ambiguous Authority**

· *Roger Duck* (University of London),  
Ambiguity in Revolutionary French Local  
Government. The Example of the Bas-  
Languedoc

· *Tom Grimwood* (Lancaster University),  
Irony, Interpretation, Authority

· *Andras Szalai* (Central European University),  
Coping with the Security Dilemma - a  
Fundamental Ambiguity of State Behavior

· *David Lewin* (University of Kent),  
'They Know not What They Do': the  
Ambiguity of Technological Agency

**11.15-11.30: Coffee Break**

### **11.30-12.30: Visual Ambiguity**

· *Gavin Maughfling* (University of Hertfordshire),  
Sliding Gestures: Ambiguity of Meaning  
and Intent in Visual Practice

· *Justyna Stepien* (University of Lodz),  
Visual Ambiguity in Pop Art Collage

**12.30-14.00: Lunch**

### **14.00-15.30: Authors and Ambiguous Languages: the Struggle of Conveying Meanings**

· *Megan Entecott* (University of Kent),  
The Role of Language in *A Clockwork  
Orange*

· *Harriet Clements* (University of Kent),  
To what extent is Hofmannsthal's  
Sprachskepsis determined by his genre?

· *Duane Williams* (University of Kent),  
Where a Silence is Said: the Ambiguities  
of Apophanticism

**15.30-16.00: Coffee Break**