

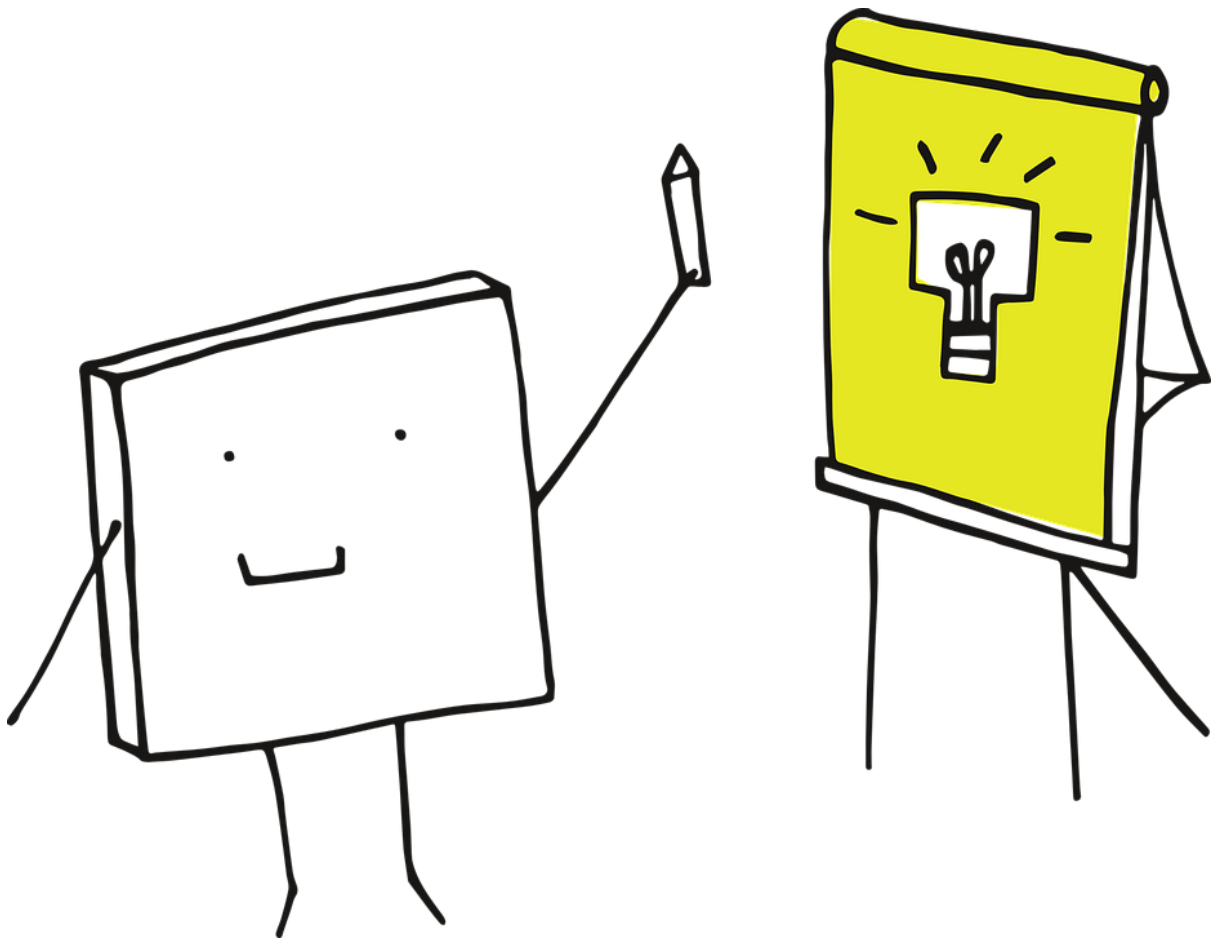
Presenter Biographies

Scholarly Communication Conference

University of Kent, Canterbury

Thursday 2nd May to Friday 3rd May 2019

#ScholComm19



Suzanne Atkins

Open Access and Research Publications Advisor, University of Birmingham

Suzanne Atkins is the Open Access Advisor at the University of Birmingham. As part of her role in the University's Scholarly Communications Services team, she provides training and advice on open access for publications and other areas of open research. She is also responsible for the management and promotion of the University's open access budgets, including RCUK, COAF and internal funds. Suzanne is also engaged in wider open access community initiatives, and is a committee member of UKCORR. Before joining the University of Birmingham, Suzanne worked at the University of Warwick in the areas of open access and research support.

Suzanne Tweets as [@suzanne_atkins](#)

Julie Baldwin

Research Librarian, University of Nottingham

Julie Baldwin is a Research Librarian at the University of Nottingham. This is her first professional post after completing her MA in Librarianship in 2017 at the University of Sheffield, which followed five years working in academic libraries. In her current role she primarily supports researchers in their open access publishing endeavours, but has a strong interest in championing innovation and advocacy which culminated in leading a wide range of events during Open Access Week 2018. She is also interested heavily in copyright and has published an article examining the early stages of the UK-SCL initiative 'The UK Scholarly Communication Licence: Attempting To Cut Through The Gordian Knot Of The Complexities Of Funder Mandates, Publisher Embargoes And Researcher Caution In Achieving Open Access' with Professor Stephen Pinfield, at the University of Sheffield.

Julie Tweets as [@Julie_Baldwin](#)

Nicola Barnett

Repositories Coordinator, University of Leeds

I am the Repositories Coordinator at the University of Leeds. I have worked for Leeds University Library since 2001. I've had a variety of roles starting in customer services, then moving to work in faculty team support. The biggest change came for me when I got the job as the REF Outputs Coordinator on REF2014 where I discovered a love of metadata! Once the REF was over I began to work on the two Leeds University repositories (White Rose Etheses Online and White Rose Research Online), making theses and research outputs available open access. After a period as the Repository and Open Access Officer at Leeds Trinity University, I took on my current role, where I manage a team dedicated to making Leeds University research outputs openly available.

Nicola Tweets as [@NicolaBarnett74](#)

Jane Belger

Research and Open Access Librarian, University of West England

Jane has been job sharing the role of Research and Open Access Librarian with Anna Lawson for over 4 years. Her focus is to support research staff and students with their publishing and data management needs. This includes teaching these skills on the researcher development framework, managing the RCUK block grant and advising on open access compliance. She also manages the UWE Bristol repository team and represents the library at faculty research committees. Jane has been working in university libraries, mainly in customer service roles, for nearly 20 years. She previously worked as a radiographer, before embarking on a career change. Jane enjoys the challenges of working within the small research support team at UWE Bristol. She particularly enjoys meeting researchers on a 1:1 basis and getting to hear more about their research and how best to support them. Most recently, this has included being involved in a faculty project to better support staff with the systematic review process. Jane also loves travelling and is a regular concertgoer. Her summer diary is jam packed with open-air gigs and festivals!

Jane Tweets as [@jbelger67](https://twitter.com/jbelger67)

Stuart Bentley

Research Officer, University of Hull

Stuart Bentley began his library career as a library assistant in City of York public libraries, before passing his MSc in Information Studies at Leeds Beckett University in 2004/5. He then moved into academic libraries at York St John University, holding several roles including Information Support Librarian and Assistant Health Information Specialist. In 2012 he moved to the University of Hull working as an Assistant Librarian in the academic liaison team, supporting the Faculties of Health and Science and the Hull York Medical School. During this period he became involved in work to improve research support within the University Library and moved into the role of research officer when the University Library created its Research Services Team in 2015. Since then he has been heavily involved in managing deposit of research outputs into the University's institutional repository, including a migration to a new research information system in 2017, as well as the development of staff development programmes in open access, research data management and bibliometrics.

Stuart Tweets as [@HullUni_LibRST](https://twitter.com/HullUni_LibRST)

Isabel Benton

Research Coordinator, Leeds Arts University

Isabel Benton is Research Coordinator at Leeds Arts University in West Yorkshire. Leeds Arts University is the only specialist arts university in the north of England. Isabel joined Leeds Arts University in October 2018, after completing her graduate traineeship at the University of York Library. She is particularly interested in open access, practice research and increasing the profile of arts research.

Isabel Tweets as [@isabel_benton](https://twitter.com/isabel_benton)

Cassie Bowman

Open Access Officer, London South Bank University

Cassie Bowman is the Open Access Officer at London South Bank University and has been in this role since early 2018. Cassie has a varied background in information management, with experience across subscriptions and licensing, children's libraries, and website management. She enjoys being part of the scholarly communications environment, particularly in relation to Open Access, and finding out how libraries are influencing how research is disseminated. She is particularly interested in the intersection between technology and engagement, and what librarians can do to enhance the research experience. Cassie is currently working towards her chartership, and has recently joined the CILIP London Member Network as the Web Editor. She lives in London and spends her spare time reading, drawing and bothering her cat.

Cassie Tweets as [@casshmbowman](https://twitter.com/casshmbowman)

Josie Caplehorne

Scholarly Communication Coordinator, University of Kent

The Office for Scholarly Communication provides support for researchers in maximising the dissemination, in the widest sense, of their work, fostering a diverse and inclusive interdisciplinary research environment through creating inclusive and adaptable systems, training and support. Josie maintains the University of Kent Open Access publishing offer, and provides Open Journal System hosting support to existing and new journal editors. She works with researchers on dissemination planning, including gathering intelligence around publishing and scholarly communication innovations. She also promotes Kudos to Kent researchers, to help increase the visibility and impact of their published works. Josie is passionate about Equality, Diversity and Inclusion (EDI) and is the Information Services EDI Representative at Kent.

Josie Tweets as [@JosieCaplehorne](https://twitter.com/JosieCaplehorne)

Ian Carter

Director, Carter Research Navigation Limited

Ian Carter has 30 years' experience in research management, across a range of topics and contexts. He is now an independent consultant having worked for three universities and in the capital engineering industry. During his career he has served on a number of national committees, project boards and working groups, including for Research Councils UK, the Scottish and English Funding Councils, Universities UK, Jisc, and HESA, on topics such as full economic costing, grant management systems, open access, research careers, research assessment, and research information management. He is a Chartered Engineer, a Registered Technology Transfer Professional, a former chair of ARMA, a Distinguished Faculty of SRA International, and has been a non-executive director of four companies.

Kim Davis

Information Specialist, University of Plymouth

Library liaison lead for the School of Biological and Marine Sciences. Kim has an additional role developing research support advocacy services on behalf of the Academic Engagement team of Information Specialists and is currently focussing on Research Data Management.

Kim Tweets as [@kiminthelibrary](https://twitter.com/kiminthelibrary)

Silvia Dobre

Research Information Manager, University of Kent

Silvia Dobre is the Research Information Manager in the Research Excellence Team (RET) at the University of Kent. The RET supports and monitors the REF, ORCID, Public Engagement and Research Impact, as well as the systems supporting Research Management, such as KRIMSON, SciVal and Vertigo Ventures. Silvia's role is focused on the sourcing, analysis and visualisation of internal and external research-related data, an important role in supporting strategic decision making processes in the lead up to the REF. She has worked in higher education in project management, consultancy and planning roles; her previous work was in the private sector in marketing, market research and business intelligence roles.

Silvia Tweets as [@Silvia_C_Dobre](https://twitter.com/Silvia_C_Dobre)

Fred Flagg

Repository Assistant, University of Leeds

Fred Flagg got his start in libraries working behind the front desks at three different Cape Cod, Massachusetts village libraries, and he is now a Repositories Assistant within the Library Research Support Team at the University of Leeds. He studied History as an undergraduate at Drexel University in Philadelphia, and did his best to avoid the siren call of Libraries and Information before graduating from the Information School at the University of Sheffield in 2007. In between, he worked as a sandwich maker, antique stove restorer and expatriate English teacher, all before emigrating from the United States to Yorkshire in 2012. Fred came to the University of Leeds in 2013 and worked as an Accreditation and Quality Assurance officer before moving to the Library in 2016.

Patricia Herterich

Research Repository Advisor, University of Birmingham

Patricia Herterich is the Research Repository Advisor at the University of Birmingham. As part of her role in the University's Scholarly Communications Services team, she provides training and advice on research data management and reproducible and open research and manages some of the University's research data services such as DMPOnline. She is responsible for the management, technical development, and promotion of the University's institutional repositories including the eData repository and eTheses repository. Patricia is a Software Sustainability Institute Fellow 2019. Before joining the University of Birmingham, Patricia worked as a data librarian in CERN's Scientific Information Service where she carried out research on the information architecture and requirements of research data services for High Energy Physics and developed an interest in Open Science, collaborative research, and skills and tools to support changing practices in scholarly communication.

Patricia Tweets as [@phherterich](https://twitter.com/phherterich)

Claire Kemp

Senior Account Manager, Kudos

Claire has worked in the scholarly information sector for over a decade, and is passionate about scholarly communications and helping researchers maximise the impact of their work. She works at Kudos, building strong relationships with clients, and helping them make the most of the service. She has an MSc in Computer Applications and her research focused on ways to improve the dissemination of Archaeological research.

Claire Tweets as [@kempcl](https://twitter.com/kempcl) and [@GrowKudos](https://twitter.com/GrowKudos)

Simon Kerridge

Director of Research Services, University of Kent

Simon has been a research manager and administrator for 25 years. He is the immediate past chair of CASRAI, the international Consortium Advancing Standards in Research Administration Information that hosts CRediT – the author Contributor Role Taxonomy. He is also immediate past chair of ARMA, the UK Association of Research Managers and Administrators, and has a passion for developing the profession; he currently chairs the EARMA Awards Committee. Following the initial NCURA funded Research Administration as a Profession ([RAAAP](#)) project that conducted the largest ever RMA survey he now leads the follow-on INORMS RAAAP project to start developing a longitudinal dataset. He also sits on the UK Government Open Standards Board, and was a member of the UUK Open Access Co-ordinating Group, and the team that produced the *Metric Tide* report, and has served on a number of other national UK committees on topics such as research impact, open access, grant management systems, research development, research assessment and research information management. Simon holds a doctorate in research management and administration and is adjunct faculty on the Johns Hopkins international masters in research administration.

Simon Tweets as [@SimonRKerridge](#)

Lucy Lambe

Scholarly Communications Officer, London School of Economics

Lucy Lambe is the Scholarly Communications Officer at the London School of Economics (LSE) Library. She runs a publishing advice service for staff and students covering all aspects of publishing. Last year she launched LSE Press, the School's open access publishing platform and first university Press, and this year will launch an online press just for student publications. Before working at LSE, Lucy worked in the open access support team at Imperial College London.

Lucy Tweets as [@lucylambe](#)

Anna Lawson

Research and Open Access Librarian, University of West England (UWE)

Anna is Research and Open Access Librarian within the small Research Support Team at UWE Bristol, a role she shares with Jane Belger. Her role is to provide library-related support to researchers and postgraduate students with their research. This includes, amongst other things, advising on open access, running training sessions, line managing the UWE Bristol Repository Team, and advising on research data management. Anna has worked in university libraries for over 15 years, and in research support, both as a Repository Manager and Open Access Librarian, since 2010. She is passionate about supporting researchers and demystifying open access, and strongly believes in supporting librarians to achieve their potential. She achieves this by being a CILIP mentor, and is on the organising committee for the next DARTS conference. Anna also loves travelling and trying new wines. Currently she also spends significant amounts of her time learning new child management techniques for her three children.

Anna Tweets as [@LawsonAnna](#)

Alison McNab

Academic Librarian, Research Support, University of Huddersfield

Alison McNab is an Academic Librarian at the University of Huddersfield whose focus is on supporting researchers at all stages of the research cycle. She has regularly pioneered the implementation of new technologies and resources, with a focus on their use to enhance service development and delivery. Her professional interests include accessibility and assistive technologies, current awareness and trend-watching, marketing and exploitation of e-content, scholarly communication and publishing, and the use of social media by libraries. She has contributed to the wider profession by writing, editing, speaking, and through committee membership of MmIT, [UKeiG](#) and the [UKSG](#).

Alison Tweets as [@AlisonMcNab](#)

Felix Melcher

Research Assistant, FZI – Research Center for Information Technology, Berlin

Felix Melcher is a research assistant at the FZI - Research Center for Information Technology in Berlin. His primary research fields are data science with a focus on text mining and the practical application distributed ledger technology. Currently, he is mainly responsible for developing the mobile application “ploc” (pocket library for open content) - a tool that aims to simplify the search for Open Access research publications. This is a part of the project Digital Research Mining (DREAM) funded by the German Ministry of Research and Education. Furthermore, Felix is researching in the field of “Data and Knowledge Management” and intends to pursue a doctorate at the FZI. From 2012 Felix has been working as a freelancer in web and mobile software development.

Chris Morrison

Copyright, Licensing and Policy Manager, University of Kent

Chris Morrison is the Copyright, Licensing and Policy Manager at the University of Kent. He was previously the Copyright Assurance Manager at the British Library and before that worked for music collecting society PRS for Music. He is co-author (with Jane Secker) of the second edition of Copyright and E-learning a Guide for Practitioners (Facet), and with Jane co-founded the award winning copyrightliteracy.org blog where they make their copyright education resources such as Copyright the Card Game and the Publishing Trap available. Chris is a member of the Universities UK / GuildHE Copyright Negotiation and Advisory Committee and co-owner of the copyright discussion list LIS-COPYSEEK. He recently completed a masters in copyright law from King's College London on the interpretation and application of copyright exceptions in UK higher education.

Chris Tweets as [@cbowiemorrison](https://twitter.com/cbowiemorrison) and also [@UKCopyrightLit](https://twitter.com/UKCopyrightLit)

Catherine Parker

Collections and Scholarly Communication Librarian, University of Huddersfield

Catherine has worked at the University of Huddersfield for many years, in a variety of roles including Journals librarian and Subject librarian. Her current role manages several teams including Acquisitions, Open Access, Subscriptions and the University Press. Catherine is a keen advocate of the Open Access movement and aspires to work closely with colleagues across the University with the aim of a successful REF 2021 submission.

In her spare time Catherine loves cooking with her family and walking her Cavapoodle, Milo!

Catherine Tweets as [@ScholComsLib](https://twitter.com/ScholComsLib)

Georgina Parsons

Research Data Manager and Systems Specialist, Cranfield University

Georgina Parsons is Research Data Manager and Systems Specialist at Cranfield University. She started at Cranfield in 2015 as the first RDM role-holder, to set up the RDM service and implement a data repository (prior to this she was a Systems Librarian for eight years). She now works three days a week on RDM supporting the university's staff and doctoral researchers across its two sites.

Georgina Tweets as [@KNL_MIRC](https://twitter.com/KNL_MIRC)

Kate Russell

Senior Information Specialist, University of Plymouth

Library liaison lead for the School of Engineering and the School of Geography, Earth and Environmental Sciences. Kate coordinates the activity of the Information Specialists supporting the other schools within the Faculty of Science & Engineering.

Additionally, Kate is the strategic lead for advocacy in research support and training across the Academic Engagement team of Information Specialists.

Kate Tweets as [@kate_russell](#)

Sarah Slowe

Head of the Office for Scholarly Communication, University of Kent

The Office for Scholarly Communication provides support for researchers in maximising the dissemination, in the widest sense, of their work, fostering a diverse and inclusive interdisciplinary research environment through creating inclusive and adaptable systems, training and support. Through cross departmental working Sarah co-ordinates Kent's response to external changes in scholarly communications, including best practice in Research Data Management, embedding open research and the use of responsible metrics, as well as helping researchers to raise the profile of all academic outputs.

Sarah writes the [Office for Scholarly Communication blog](#) and tweets as [@headunikentosc](#)

Nataliia Sokolovska

Researcher and Project Manager, Alexander von Humboldt Institute for Internet and Society (HIIG), Berlin

Nataliia Sokolovska is a researcher and project manager in the program "Science and Society" at the Alexander von Humboldt Institute for Internet and Society (HIIG) in Berlin. Her research interests focus primarily on scientific impact and knowledge transfer between academia and stakeholders from politics, media, economy and civil society. She works on the project Digital REsearch Mining (DREAM) in which a platform and mobile application are being developed to improve the discoverability of Open Access content and provide a framework for exchanging low-key feedback among researchers. DREAM is funded by the German Ministry of Education and Research and carried out together with the FZI Research Center for Information Technology. Furthermore, Nataliia is part of the "GO FAIR Implementation Network: Open Interfaces for Increased Visibility of Research Results" which aims to identify standards for adequate data discovery interfaces. She is one of the editors of the blog journal "[Elephant in the Lab](#)" that deals with current problems of the scientific system. Nataliia has a background in International Relations and worked for several years as an online journalist for the German public broadcaster Deutsche Welle.

Katrine Sundsbø

Scholarly Communications and Research Support Manager, University of Essex

Katrine (Kat) Sundsbø is the Scholarly Communications and Research Support Manager at the University of Essex (Library Services). Her areas of expertise include bibliometrics, publishing, open access/research, online research profiles and more. Kat is currently a one woman team on research support in the University of Essex Library, so her day to day activities includes a lot of collaboration with other sections across the university. In addition to designing the Open Access Escape Room, Kat is also one of the founding organisers of Newcomers (Network for Early Career Essex Researchers) – a network dedicated to developing research support for ECRs. In her spare time, Kat spends a lot of time with her puppy Evie and dreams about the wonderful mountains in her home country Norway.

[Katrine Tweets as @katrinesundsbo](#)

Emma Turner

Information Specialist for Aerospace, Cranfield University

Emma Turner is the Information Specialist for Aerospace, supporting aerospace staff and students (doctoral and masters) in their research and education. She has been working in this role at Cranfield University for over 20 years.

Emma Tweets as [@aero_emma](#)

Kirsty Wallis

Scholarly Communication Manager, University of Greenwich

Kirsty is currently the Scholarly Communications Manager at the University of Greenwich, leading a small team with a big remit! In post since July 2017 and based within Greenwich Research and Enterprise, Kirsty deals with a diverse range of responsibilities, with her headline duties including managing the repository and reporting on compliance, supporting the university's REF preparations and final submission. Her work continues beyond the repository into developing policy, supporting users' understanding of open access, research data management and publishing choices, advising on RCUK funds and APCs, ORCID and responsible metrics, as well as managing all related web content and support information. She also regularly teaches' academic staff and PhD students as part of the Research & Enterprise Training Institute (RETI) at Greenwich on Research Data Management, Understanding the Publishing Process, and using Social Media in an academic setting. Kirsty's qualifications are in Anthropology and Librarianship; and has background in IT support, writing for the web and Project Management. Until recently she acted as Treasurer for the local CILIP in Kent sub-branch.

Kirsty Tweets as [@OsMonkey](#)