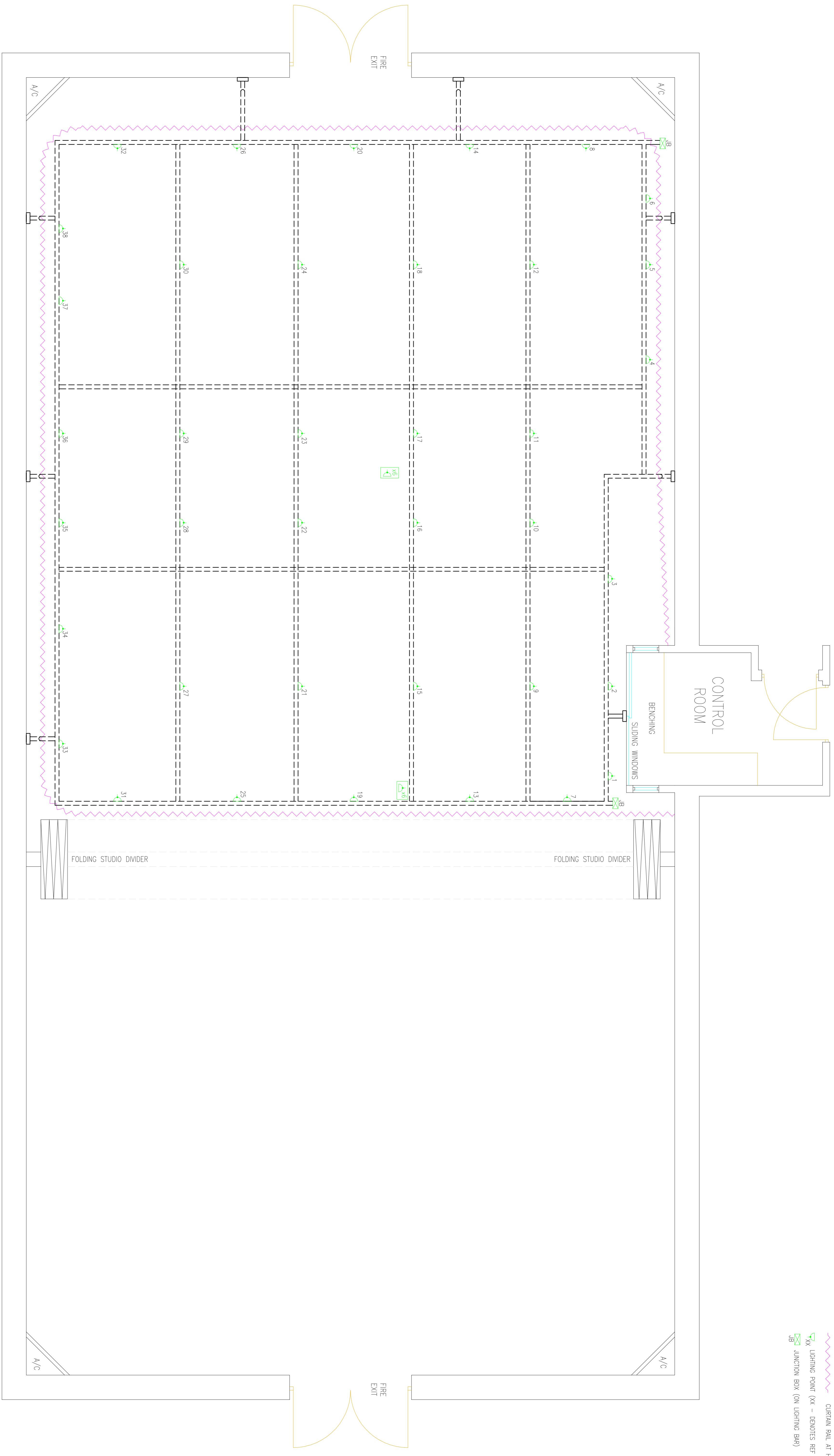


- KEY:
- LIGHTING BAR AT H/L
  - CURTAIN RAIL AT H/L
  - LIGHTING POINT (XX - DENOTES REF NO.)
  - JUNCTION BOX (ON LIGHTING BAR)



ALL LIGHTING BARS  
@ 4525 ABOVE FLOOR LEVEL



LUMLEY  
DRAMA STUDIOS

School of Arts  
University of Kent  
Kent  
CT2 7UG  
Tel 01227 827941  
E-mail [dm@kent.ac.uk](mailto:dm@kent.ac.uk)  
[www.kent.ac.uk](http://www.kent.ac.uk)

DRAWING TITLE:  
LUMLEY DRAMA STUDIO  
HIGH LEVEL PLAN

SCALE: 1:25 @A1  
DRAWN BY: DDW  
DATE: JULY 2010