

Welcome to the Drama at Kent Community

BA Drama, Theatre and Performing Arts
BA Drama and Film

Jayne Thompson
Course Director for Drama
29 September 2025

Welcome Drama at Kent!

...the start of your journey...



Welcome Drama at Kent!

...the start of your journey...



Respect, Generosity, Kindness



Meet the Drama Team





Paul Allain

Paul specialises in physical acting, physical theatre and movement, so you might meet him on modules that cover this kind of work. He's been at Kent quite a while but during this time has also taught workshops in a lot of different countries, including Poland and more recently Greece, India and China. His favourite activity is eating crisps, preferably in the hot outdoors, and he loves his bike: it has a carbon chain, you know.



Oliver Double

Olly is an expert on comic performance, with books on stand-up, variety theatre and alternative comedy. You're likely to see him giving lectures in your *Making Performance* modules, and in modules like *Popular Performance: Alternative Cabaret* and *Stand-Up Comedy* in years 2 and 3. Olly is the compere for the Gulbenkian's monthly comedy night, Funny Rabbit, where he plays funny songs on the mandolin. He's obsessed with punk rock and *Doctor Who*, and is surprisingly good at parallel parking.



Margherita Laera

Margherita works on European theatre, looking at the intersection between performance, languages and migration, such as intercultural drama, the translation of plays and the adaptation of stories from one context to another. She teaches the 2nd year core module, *Theatre and Adaptation*, and the MA *Performance Contexts* and *Dissertation* modules. You may occasionally see her cycling up or down the hill – she is very proud that she's managed to establish a new PB every year since 2012 – in both directions.



Roanna Mitchell

Roanna specialises in movement and psychophysical approaches to performance, as well as how these can be applied in mental health contexts. You're likely to meet her in modules such as *Performance Skills* (Stage 1), and *Physical Theatre: Ensemble Devising* (Stage 3). Roanna's research has taken her to many exciting places, including movement directing immersive performance in India and the US, training NHS doctors, and teaching Chekhov Technique to creatives around the world. She loves drawing, peanuts, and her dog Olive.



Mary McNulty

Mary began teaching at Kent alongside her work at Shakespeare's Globe, where she was involved in the creation of the Education Department, developing practical ways to teach Shakespeare and performance, which drew directly on early modern performance practice. Prior to that she worked as a professional actor, director and voice teacher (LRAM). Her main modules are Stage 2 *Acting (Naturalism)* and Stage 3 *Acting Shakespeare*. Living in Whitstable, she loves swimming in the sea (sewage permitting) but hates people calling it 'wild swimming' – it's just swimming!



Sophie Quirk

Sophie specialises in stand-up comedy and other kinds of comic and popular performance. She's especially interested in comedy and social justice. You're likely to meet her in the first year *Popular Performance and Citizenship* module, the second year *Performance Design and Technologies* module, and the third year *Creative Project* module. One of her favourite parts of her job is interviewing comedians. You can hear her doing this on the *Stand-up Diversity* Podcast.



Nickie Shaughnessy

Nickie's interdisciplinary research blends arts, science, health, and education, producing lived experience data on complex topics such as neurodiversity, and mental health. She's had grants for projects ranging from autism and gender to online extremism. Nickie teaches and supervises creative research across applied theatre, disability arts, and participatory performance. Outside of work, she enjoys practicing Ashtanga yoga and playing the harp—though not at the same time



Angie Varakis-Martin

Angie has a particular interest in ancient Greek theatre—both tragedy and comedy—and its adaptation on the contemporary stage. She also explores masked theatre and the techniques of acting in masks. You will encounter her in your first year on *Making Performance*, *Puppet and Object Theatre* and *Performance Skills*, and in your second year on modules such as *Theatre and Adaptation* and the employability-focused module *Creative Careers*. A dedicated runner, Angie regularly competes in half-marathons in the UK and abroad, finding inspiration for her teaching through keeping active



Tim O'Grady

Tim specialises in all areas of technical theatre including lighting, sound, stage, and production management. He will be with you throughout your course helping you create some exciting performances. He has a wealth of knowledge and experience in the arts and theatre. He was the senior lighting and sound technician at Canterbury's very own Marlowe Theatre for many years and toured with the Young Vic theatre. Be sure to ask Tim for one of his many stories from backstage. There are a lot!



Jayne Thompson

Jayne has an eclectic range of theatre interests including verbatim, site specific and multi-media performance, working in community settings and a focus on the 'untrained' body in performance. You'll meet Jayne on modules like *Writing for Performance* (Stage 2), *Community and Participatory Performance* (Stage 3). She is a performer and associate artist with Moving Memory Dance Theatre and a Creative Director with the Gateways Partnership. Jayne is an alumnus of the University of Kent and passionate about the course we offer.



Freya Vass

Freya's expertise is in dance, postdramatic and devised theatre, and cognitive studies of the arts. She will be convening your first core modules and is deeply committed to helping you succeed at uni. She also teaches Introduction to *Musical Theatre Dance* in year 2 and *Psychology of the Arts* in year 3. A former professional dancer and dramaturg, Freya is a foodie, gym bunny, and samba percussionist, as well as the staff member most likely to sing without warning.



Josh Lithgow

Joshua specialises in audio production but is here to support you with all technical needs in lighting, sound and projection. You're likely to meet him in almost all technical & performance-based modules throughout your time at the University of Kent. He loves Basketball, and making music – and thanks to his kids, has an out-of-control Lego Star Wars collection that has no end in sight

Some things to help with your arrival

1. Set up your email on your phone

<https://www.kent.ac.uk/guides/email>

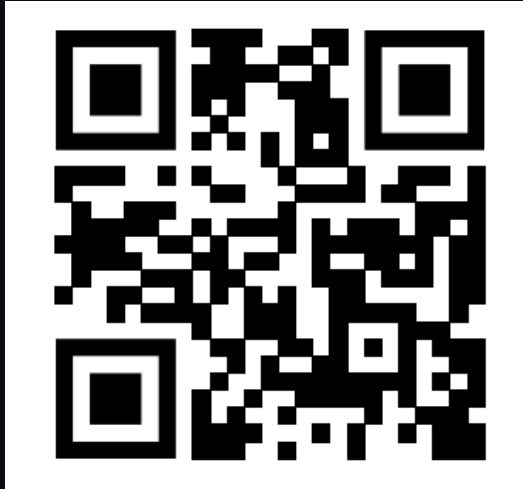


It's also worth downloading Teams to your various devices.



Some things to help with your arrival

2. Questions about enrolment, registration and arrival: go to <https://www.kent.ac.uk/welcome>



You'll also find useful info there about day-to-day life as a student, settling in, Library and IT support, etc



Your Welcome Week: Drama

	Monday 29 September	Tuesday 30 September	Wednesday 1 October	Thursday 2 October	Friday 3 October
09:00-10:00					
		Using the Library to Succeed 09:30-10:00, Gulbenkian Cinema			
10:00-11:00	Welcome to the School of Arts and Architecture 10:00-11:00, Gulbenkian Cinema	Getting to Know You: Drama Practical Session and Workshop Induction 10:00-12:00, Jarman Studio 1			
11:00-12:00					Meet Your Academic Adviser 10:00-13:00, Various Rooms (You will be allocated to a one-hour time slot)
12:00-13:00					
13:00-14:00	Introduction to Drama 12:30-14:00, Aphra Theatre				
14:00-15:00	Drama Facilities Tour 14:00-15:00, Start from Aphra Foyer			Drama Performances 14:00-15:00, Aphra Theatre	Jarman Jam 13:00-15:00, Jarman Studio 1
15:00-16:00			Funny Rabbit Collage Art Workshop 14:00-16:00, Gulbenkian Café		PechaKucha: Meet the Staff 15:00-17:00, MarLT1
16:00-17:00					
17:00-18:00	Lupino Screenings My Neighbour Totoro 16:00-18:30, Lupino Screening Room My Neighbour Totoro			School of Arts and Architecture Quiz 16:30-18:30, Marlowe Studio 3	

Your Welcome Week: Drama & Film

	Monday 29 September	Tuesday 30 September	Wednesday 1 October	Thursday 2 October	Friday 3 October
09:00-10:00		Using the Library to Succeed 09:30-10:00, Gulbenkian Cinema			
10:00-11:00	Welcome to the School of Arts and Architecture 10:00-11:00, Gulbenkian Cinema	Getting to Know You: Drama Practical Session and Workshop Induction 10:00-12:00, Jarman Studio 1			Meet Your Academic Adviser 10:00-13:00, Various Rooms (You will be allocated to a one-hour time slot)
11:00-12:00	Introduction to Film & Media 11:00-12:30, Gulbenkian Cinema				
12:00-13:00					
13:00-14:00	Introduction to Drama 12:30-14:00, Aphra Theatre				Jarman Jam 13:00-15:00, Jarman Studio 1
14:00-15:00	Drama Facilities Tour 14:00-15:00, Start from Aphra Foyer		Funny Rabbit Collage Art Workshop 14:00-16:00, Gulbenkian Café	Film and Media Facilities Tour and Induction 13:00-16:00, Start from Jarman Foyer	
15:00-16:00					PechaKucha: Meet the Staff 15:00-17:00, MarLT1
16:00-17:00	Lupino Screenings My Neighbour Totoro 16:00-18:30, Lupino Screening Room				
17:00-18:00	My Neighbour Totoro 18:00-21:30, Lupino Screening Room			School of Arts and Architecture Quiz 16:30-18:30, Marlowe Studio 3	
Evening			Lupino Screening: TBC 18:00-21:00, Lupino Screening Room		

Preparing for Week 1 of Term

1. Take a look at your timetable (how to view your timetable:

<https://www.kent.ac.uk/timetabling/student-timetable>)



2. Find the Moodle pages for your modules, DRAM4000 and DRAM4003/Film Module, and check whether you need to prepare anything.



Preparing for Week 1 of Term

3. Check your emails, and email us if you have any questions:

DRAM4000 Making Performance 1:

[Freya f.vass@kent.ac.uk](mailto:Freya.f.vass@kent.ac.uk)

DRAM4003 Popular Performance and Citizenship:

Sophie s.quirk@kent.ac.uk

General Questions:

Jayne j.e.thompson@kent.ac.uk



TODAY AND TOMORROW!!

**Groups for tour today and tomorrow
(Tuesday) with Isabelle**

**EVERYONE MEET IN JARMAN FOYER JUST
BEFORE 10AM**

Group A:

10-11am Workshop with Isabelle in Jarman 1
11-12 Scenography workshop induction with
Sam

Group B:

10-11am Scenography workshop induction
with Sam
11-12 Workshop with Isabelle in Jarman 1



NEXT WEEK

You're ALL taking the module DRAM4000 - Making Performance 1 The Fundamentals:

Lecture Tuesday COLT 3 from 12.00/2.00pm (all of you together)

Workshop Tuesday/Wednesday(in groups, check your timetable)

Seminar Wednesday/Friday (in groups, check your timetable)



You all have a second module this term, and if you are doing a second Drama module then this will be DRAM4003 Popular Performance: Pubs, Clubs and Citizenship:

Seminars: Fridays (in groups, check your timetable)

Lecture: Monday 10/12.00noon

Some useful terminology and people

- **Module Convenor:** The lecturer overseeing the module
- **Moodle:** Where you find details about what to do for each module each week
- **Academic Adviser:** A designated lecturer whom you can contact about general academic advice and questions. You can see on Kent Vision who your academic adviser is.
- **Programme Admin Team:** This team will assist with things like checking you are registered on the correct modules.
- **Skills for Academic Success (SAS):** A very useful team of people that can support you with essay writing etc <https://student.kent.ac.uk/studies/skills-for-academic-success>
- **Engagement Support:** The team that can help you with extenuating circumstances, deadline extensions, attendance issues etc <https://student.kent.ac.uk/support/engagement>
- **Student Support and Wellbeing:** The team that can help with physical and mental wellbeing and Inclusive Learning Plans (ILP) <https://www.kent.ac.uk/student-support>
- **ILP:** An Inclusive Learning Plan, which is used to specify reasonable adjustments (eg for disabilities, ADHD, Autism, Dyslexia etc). You can register for an ILP via this link: <https://student.kent.ac.uk/support/inclusive-learning-plans>

Here is a website that gives you an overview of which team to contact about which questions:

<https://student.kent.ac.uk/studies/school-support-teams>

????

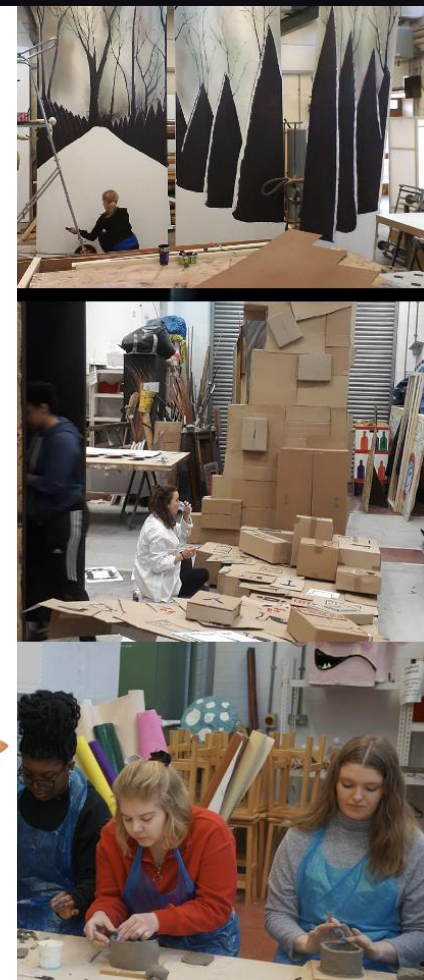
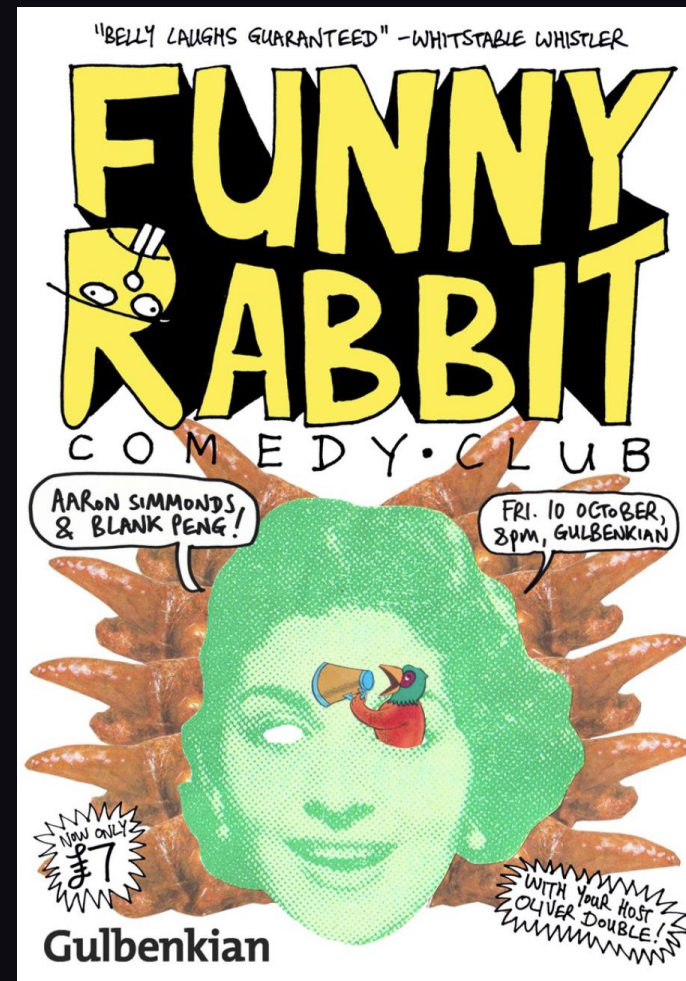
Need Help?

- Your academic adviser
- Your seminar tutors and module conveners have office hours during which time you can make an appointment to see them
- Your Subject Lead – Jayne
- The Programmes Administration Team (progadmin@kent.ac.uk): eg for changing modules, timetable queries, changing seminar group)
- The Engagement Support Team (engagementsupport@kent.ac.uk): eg for absence/attendance, extenuating circumstances, extensions, inclusive learning plan queries.
- Kent Student Support and Wellbeing (KentSSW@kent.ac.uk): help with mental health, disability, autism and specific learning differences (SpLDs, including ADHD and dyslexia), and accessibility.



Make the most of your time at Kent

- Employability Points Scheme (volunteering, student mentoring, work placements)
<https://student.kent.ac.uk/careers/employability-points>
- Be a student rep
- Kent Union Volunteering and Work Opportunities
- Gulbenkian Theatre Membership and Opportunities
- Student Societies: T24, Musical Theatre Society and many more
- Jarman Jam
- Funny Rabbit Comedy Club
- Extra performance opportunities
- Keep in mind the Graduate Theatre Company Scheme (applications open in May 2026)



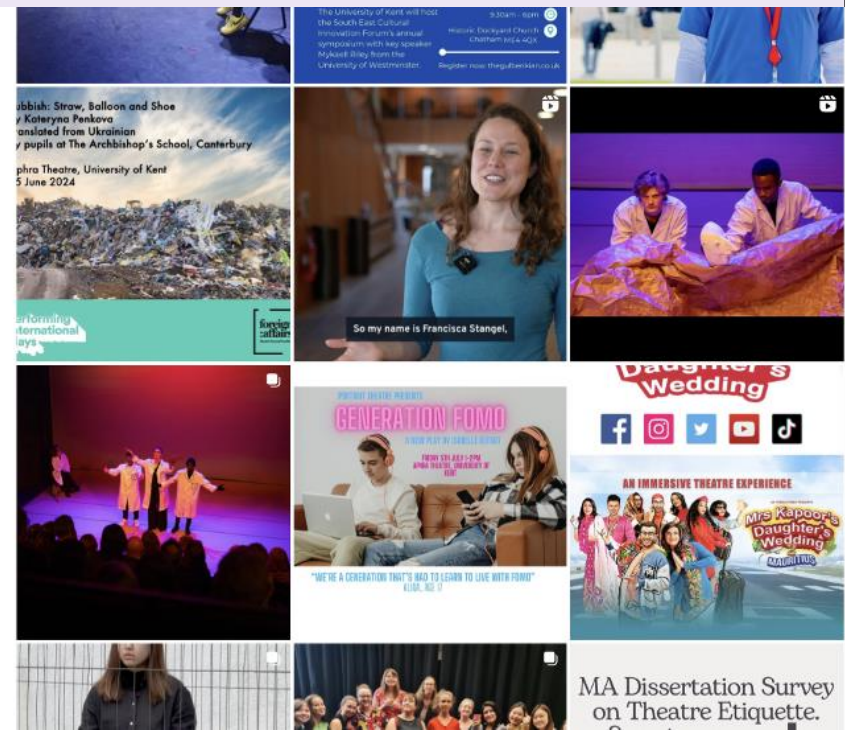
Graduate Theatre Company Scheme

Mentoring, rehearsal space, GTC office, support

Current GTCs

- **Bits & Pieces**: trans-led theatre company
- **Portrait Theatre**: verbatim theatre
- **Oida! Theatre** : new writing by womxn
- **Moonbeam**: multisensory theatre for children with special educational needs
- **Unity Arts**: international physical theatre





Your Drama at kent Community!

More questions before Week 1?

Contact Jayne Thompson (Course Director for Drama):

j.e.thompson@kent.ac.uk