



Year in a Language

Welcome!

Your Year at a Glance

Autumn	Spring	Summer
Language Immersion 1	Language Immersion 2	Language Immersion 3
Intercultural Communication 1	Intercultural Communication 2	ML Cultural Project

Year Long: Language Mentoring, Language Gym and Weekly workshops

Year Long – not assessed

- Language Gym DP0001
<https://moodle.kent.ac.uk/2025/course/view.php?id=2227>
- Language Workshops
<https://www.kent.ac.uk/language-centre/language-gym/language-workshops>
- Language Mentoring (Tomorrow, Wednesday 11-12 COLT3 and 12-1 – CNW seminars)

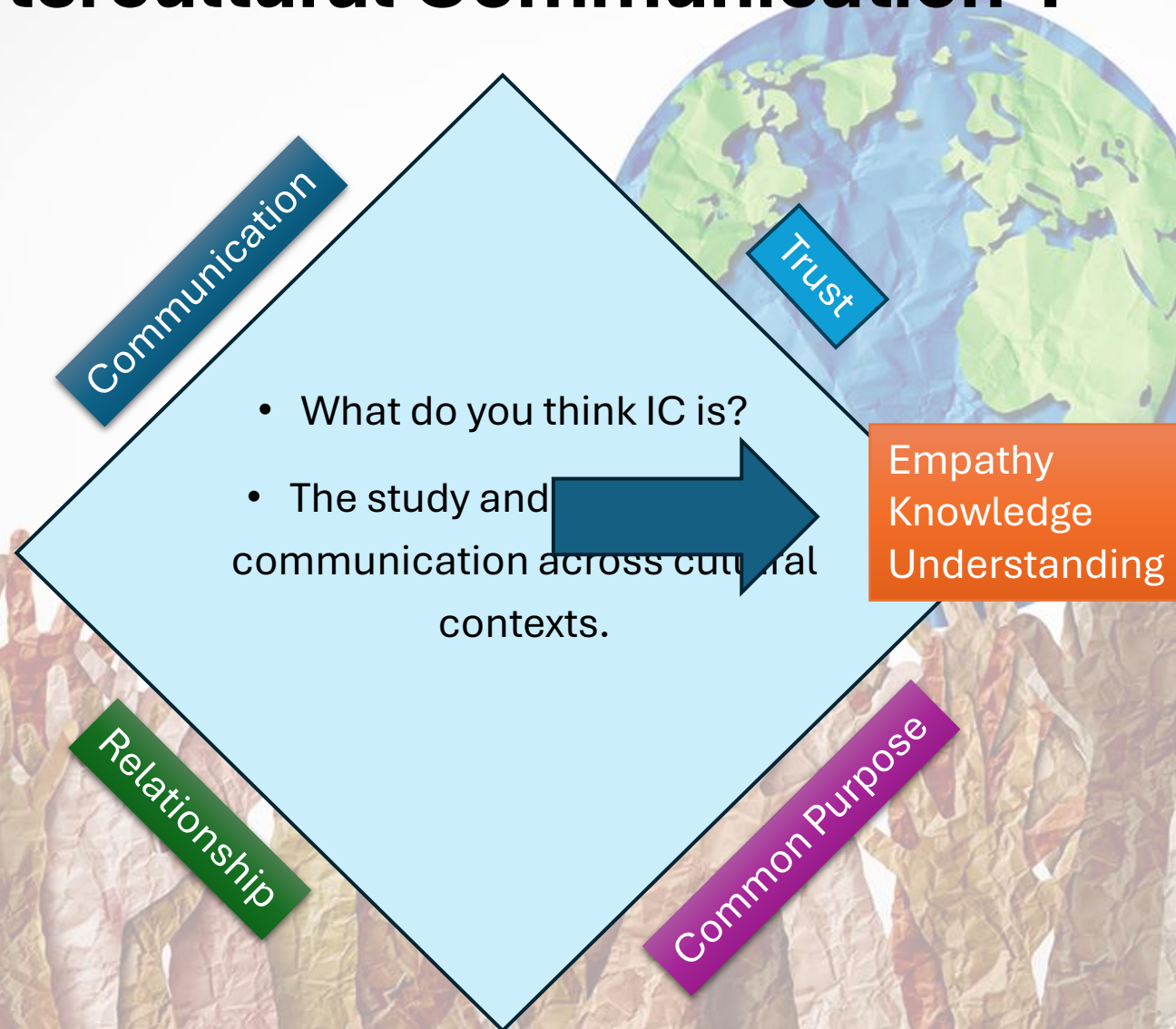


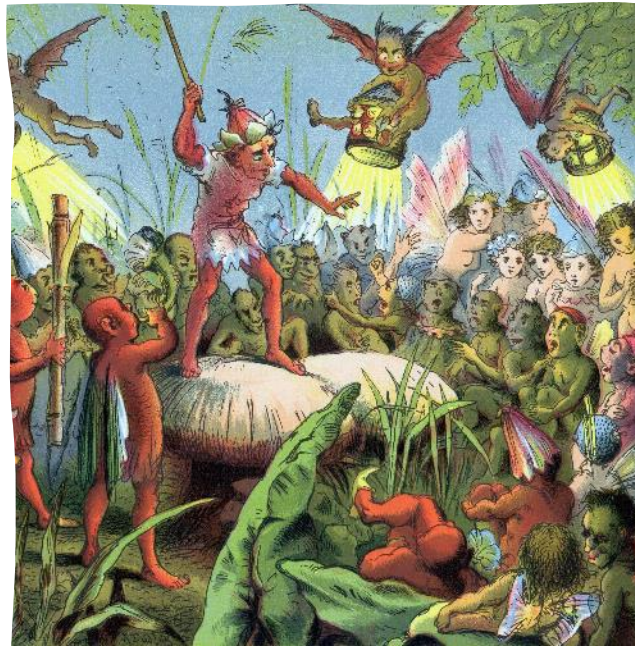
Language Immersion Modules

- 4 hours per week
- Designed for you to dive into the language
- Linear progression: immersive and continuous
- Assessed
- Example:
<https://moodle.kent.ac.uk/2025/course/view.php?id=1896>



Intercultural Communication 1



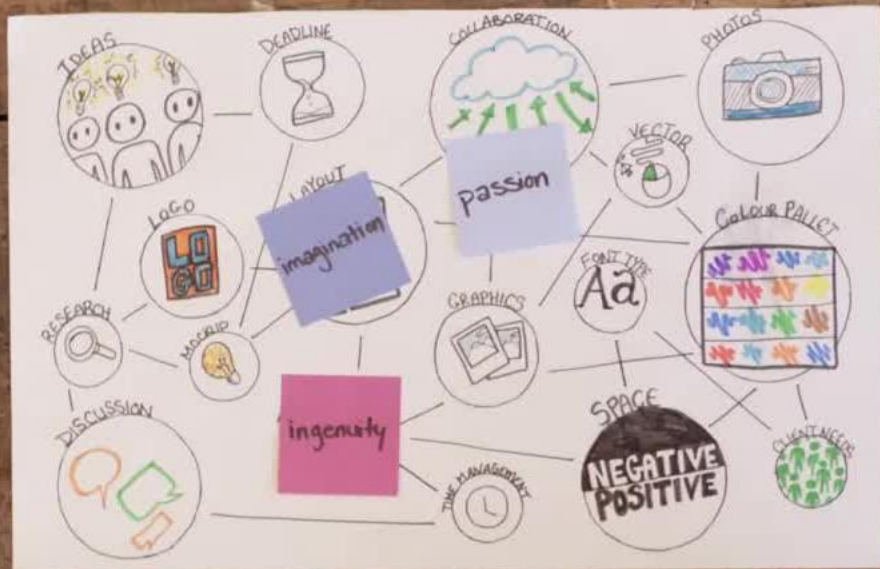


Intercultural Communication 2

- Where the fun begins!
- Study and practice cross-cultural artefacts and concepts
- Study and practice different cultural understandings of human nature
- Examples include: folklore, gender studies, superstition, food

Modern Languages Cultural Project

- Supervised project work
- On a cultural aspect of the language you study
- Inspired by IC2 – but free to choose
- Will require full engagement with the language studied (although you will write it in English)





The sky's the limit!

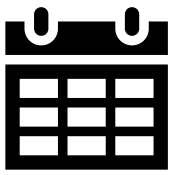
- Try out another language...
- Or consolidate one you already know
- Play around with the language gym

Welcome Back!

Some updates to help prepare you for this year.

A place for belonging.
A home for ambition.

student.kent.ac.uk



Changes to the timetables

The University has made lots of changes to get the timetables confirmed and released to you early and to improve the organisation of your course.

The terms are now shorter (10-weeks) with **2 modules per term**.

Fewer modules each term means more time to focus on each module with fewer deadlines which are better spaced.

Final exams/final assessments will be at the end of each term (while module content is fresh in your mind).

Module marks will be released after each term. This means that you will be able to see how you are progressing and know right away if you are likely to have resits (although all marks still need to be checked and confirmed at end of year Exam Boards in July).

<https://student.kent.ac.uk/studies/timetabling/student-timetable>



NEW central locations for NEXUS

To make it easier for you to find support, school support teams now sit alongside each Nexus Information Desk in three central locations.

Visit any Nexus desk when you have questions or need to speak to someone. Nexus staff can help with general information, and Engagement Support and Programme Admin teams are also available if you need more specific advice.

You can contact online, call, drop-in or visit by appointment as needed.



Templeman Library, Canterbury



Sibson Building, Canterbury



Medway Building, Medway



<https://student.kent.ac.uk/support>

NEW central locations for specialist support

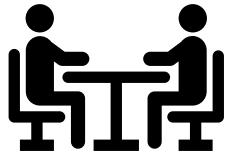
Student Support and Wellbeing specialist support for disability, mental health, and ongoing needs is now available in **Eliot Extension**. <https://student.kent.ac.uk/support/wellbeing>



Careers and Employability advice and practical specialist support for career and employability is now available in **Rutherford Extension**.
<https://student.kent.ac.uk/careers>

Skills for Academic Success workshops, tutoring and other support for academic skills is now available in **Rutherford Extension**.
<https://student.kent.ac.uk/studies/skills-for-academic-success>





Updated support from Academic Advisers

To ensure that you and **all** students have consistent contact with academic staff to support your progress and help you do your best, the University has updated our Academic Advising scheme.

This year, you will have **a minimum of two Personal Feedback Meetings** and **one Group Meeting** with your academic adviser. You can also request additional individual meetings at any time.

<https://student.kent.ac.uk/studies/academic-advisers>

Your Academic Adviser can:

- Discuss your progress.
- Guide you on module choices and academic development.
- Support your career planning.
- Write references for job or further study applications.

And lots more...





Updated Attendance and Engagement procedure

The University has updated the Attendance and Engagement procedure to increase the level of contact for students who are not fully engaging with study. We check your in-person attendance every couple of weeks across each teaching term, and if you are not attending then we will check-in to try to help.

If you are contacted about your attendance, please:

1. Start attending (and continue to engage on Moodle, etc).
2. Log your attendance on **Presto** or self-report if you need to be absent.
3. Speak to your Academic Adviser and the Engagement Support team.



Unfortunately, if you are not attending in-person teaching then it may get to the point where you will not be able to continue your studies (but we want to help before it gets to that point).

<https://student.kent.ac.uk/studies/engagement-with-study>



New Late Submission Policy

If you miss a deadline and need a bit more time ... no approval needed.

**up to 24 hours late
max mark is 60**

Where the assignment is submitted **within 24 hours** of the published deadline, the mark recorded for the piece of work may not exceed the mark of 60;

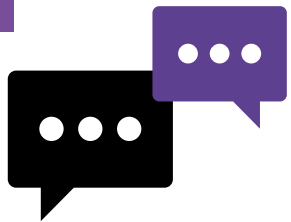
**up to 48 hours late
max mark is pass**

Where the work is submitted **within 48 hours** of the published deadline, the mark to be recorded for the piece of work will be capped at the pass mark for the module;

**more than 48 hours
mark is zero**

Where work is **more than 48 hours** after the published deadline a mark of zero will be recorded (this was the rule last year for all late work without approved extension).

OR you can request an extension to the deadline without any mark penalty if they have extenuating circumstances that are eligible for mitigation.



Support for Extenuating Circumstances

If you are struggling to attend teaching or if you are struggling to submit your work, then please contact the Engagement Support team.

Lots of things can make it difficult to do your best and fully engage with your studies. Whatever the situation, contact the team when things first happen, so that we can help. You can email, call, drop-in or visit by appointment as needed.

New email: EngagementSupport@kent.ac.uk

New locations: Ask for the team at any of the three Nexus desks if you need to speak to someone about personal circumstances or if you need advice about your options.

<https://student.kent.ac.uk/support/engagement>



Your Uni / Your Say

Your feedback matters! These changes were made with valuable input from students, to improve the organisation of your course, to better support you to progress and success, and to help you get the most from your experience at Kent.



Become a **Student Shaper**



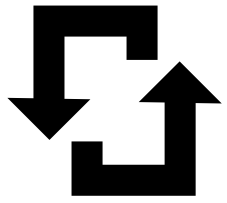
Become a **Student Rep**



Join an **Advisory Board**

See all the ways to get
involved and contribute to
Student Voice
#YourUniYourSay





Returning student registration

If you have not already, complete your Returning Registration on KentVision.

Completing Returning Registration confirms that you are officially back and ready to study.

If you do not complete registration then you may:

Lose access to your timetable and modules on Moodle.

Delay your Student Finance payments

Risk being unable to continue your course

If you need help before 20 October deadline:

Email: csao@kent.ac.uk

Canterbury: Visit the Arrivals Hub in Templeman Library

Medway: Visit Medway Building Reception

