



Government  
Economic  
Service



# Candidate Pack

Government Economic Service

Assistant Economist Scheme 2022

Applications open: Monday 7 March 2022

Applications close: Monday 21 March 2022 23:55 (PM)



# What is Government Economic Service ?

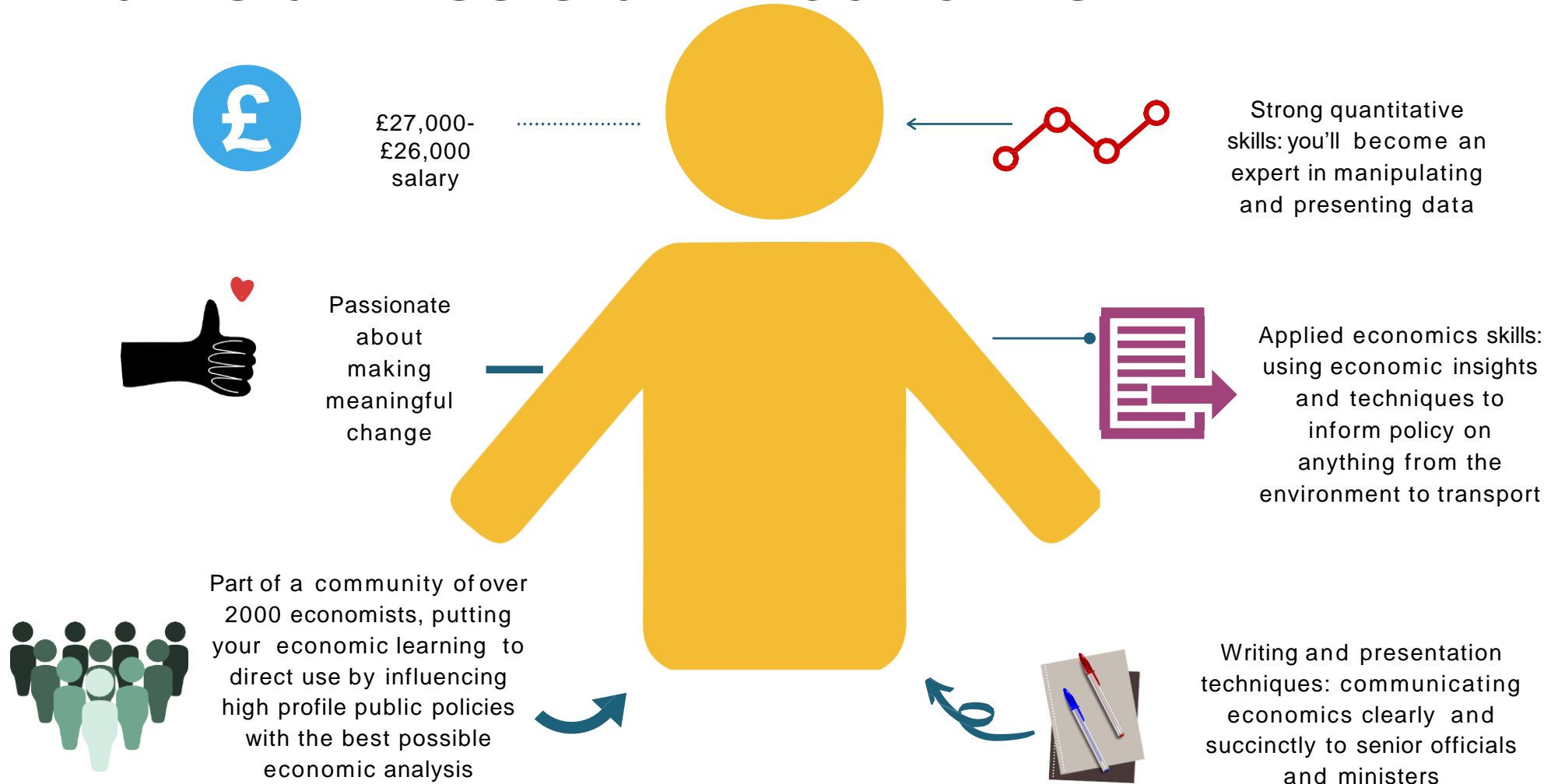
- The Government Economic Service (GES) is a professional body for economists in the UK Civil Service and was established in 1964. GES Members are employed, paid and managed by government departments or agencies.
- The GES works to help the government make decisions based on high-quality analysis. The GES has a variety of entry routes, including a degree apprenticeship, fast stream, summer schemes, placement years and of course, the Assistant Economist (AE) scheme.

# What is the Assistant Economist Scheme?

- This is a recruitment scheme for economics graduates to work as an Assistant Economist in the Government Economic Service.
- We are recruiting **over 200 economists** to join us to help us deliver analysis and influence the day-to-day lives of every person in the UK.
- As an assistant economist, you will be joining a community of over 2,000 economists across more than 30 organisations.
- You will be putting your economic learning to direct use by influencing high profile public policies with the best possible economic analysis.



# What is an Assistant Economist?



# Entry requirements

## Academic requirements:

Applicants will need to possess or will be expected to have at least an upper second-class honours degree.

Please review the essential criteria below:

- Hold an Economics degree.
- If you completed a joint degree, at least 50% of the modules must be economics or have a MSc in economics.
- Modules must have covered both micro and macroeconomics to qualify.
- If you graduated more than five years ago then you must have examples of how you have maintained your economic knowledge on the technical section of the application form.

## Eligibility requirements:

You are eligible to apply if you're a:

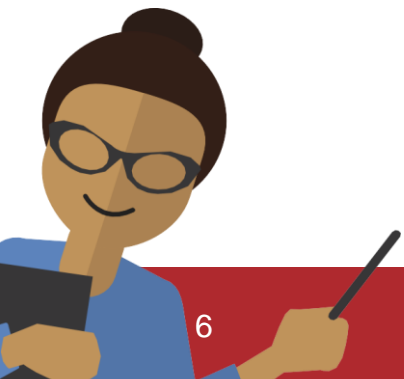
- British citizen European Economic Area (EEA)
- Commonwealth citizen Swiss national
- Turkish national, in some circumstances
- Nationality requirements are explained in more detail in the Civil Service nationality rules
- Individuals will need to demonstrate that they meet the relevant immigration requirements and demonstrate their eligibility under the Civil Service Nationality Rules (CSNRs).
- Individuals must have the right to work in the UK,
- We do not offer sponsorship for these vacancies.
- [Please click here for more information](#)





# Application FAQs

- **Question: I HAVE PREVIOUSLY APPLIED FOR THE GES FAST STREAM. CAN I STILL APPLY FOR THE GES AE SCHEME?**
  - **Answer:** Yes – this scheme is open for all graduates with a first or 2:1 in economics or in a joint degree with at least 50% in economics, or with a master's degree in economics (please see the eligibility page for more details). If you have applied to previous GES Fast Stream or other schemes prior to this one, you are not disqualified from applying to this scheme.
- **Question: Is security clearance required?**
  - **Answer:** Yes. If successful you must hold, or be willing to obtain, security clearance to CTC/SC/DV level. Certain departments require a 3-year footprint in the UK. More information about the vetting process can be found [here](#). More information can be found on the departmental job descriptions.





# Application FAQs (continued)

- **Question: WHAT IS THE DIFFERENCE BETWEEN THE ASSISTANT ECONOMIST SCHEME AND THE FAST STREAM?**
- **Answer:** The GES Assistant Economist scheme is the recruitment pathway for economist careers within the Civil Service. It, therefore, focuses on developing the technical skills and experience needed to be a government economist and the wider behaviours that will support you to be an effective Civil Servant. By comparison, the GES Fast Stream scheme is an accelerated development programme that seeks to develop future leaders, both in the GES and the Civil Service more widely, and therefore has a specific focus on developing leadership skills and experience. Both schemes test and will develop your economics knowledge, application and communication, and training to support the development of technical and leadership skills will be available in either case.





# Application FAQs

- **Question: WHY HAS SOMEONE RECEIVED THEIR ONLINE TEST RESULTS BEFORE ME?**
  - **Answer:** Some of the tests are staggered to give the recruitment team time to review the scores. Don't worry, the latest you'll hear about your results will be at the end of April and you will have two weeks to prepare for the next stage of the assessment.
- **Question: CAN I CHOOSE WHICH DEPARTMENT I WILL WORK FOR?**
  - **Answer:** We do ask for your departmental and location preferences if you are successful at all stages of assessment. When assigning you to a department, we take into account your preferences, but we cannot guarantee that you will get your choice of location or department.
- **Question: I AM A CURRENT CIVIL SERVANT – CAN I APPLY?**
  - **Answer:** Of course, as long as you meet the entry requirements!





# Benefits

- In the GES, we take your **career and development** seriously. You'll benefit from regular performance and development reviews with your line manager.
- The Civil Service offers **wellbeing support**, as well as support for those with **disabilities**. The GES is an **inclusive** place to work, so don't let anything physical or mental hold you back from applying!
- We always encourage those in the GES to feel comfortable to come to work as themselves. We're a **social bunch** and you'll have the opportunity to be part of a **fun community**.
- Click [here](#) to read more on disability in the Civil Service.



1



An extra paid day off work for the queens birthday.

2



Competitive contributory pension scheme.

3



Occupational sick pay.

4



Generous paid maternity and paternity leave.

5



Interest-free loans to spread the cost of an annual travel season ticket or a new bicycle.

6



25 days annual leave, increasing to 30 days after 5 years of service. This is in addition to 8 public holidays.

7



Opportunity to use on-site facilities including fitness centres and staff canteens (where applicable).

8

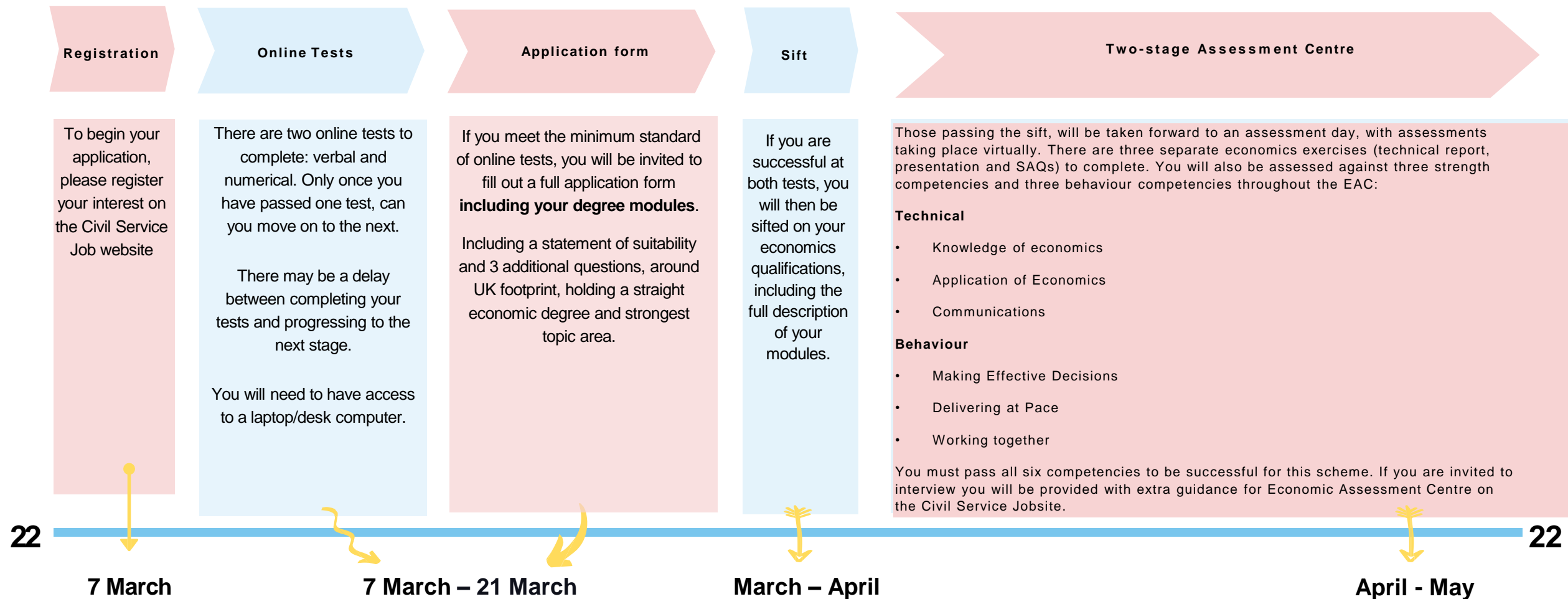


Flexible working patterns and access to Flexible Working Schemes. Allowing you to vary the length of your working day, as long as you work your total monthly contracted hours.

# How to apply

## Resources (click links below to access):

- [Civil Service test information](#)
- [Verbal practice test](#)
- [Numerical practice test](#)



# Follow our social media channels for updates

(click the links/handles below to open pages)

- **Website:** <https://www.gov.uk/government/organisations/civil-service-government-economic-service>
- **Facebook:** [@GovEconService](#)
- **Instagram:** [@GES\\_UK](#)
- **Twitter:** [@GES\\_UK](#)
- **Linkedin:** [@governmenteconomicservice](#)
- **Youtube:** [@UK Government Economic Service](#)

## Got a question? Contact us!

(click the address below to start email)

- **Email:** [GESRRRecruitment@hmtreasury.gov.uk](mailto:GESRRRecruitment@hmtreasury.gov.uk)